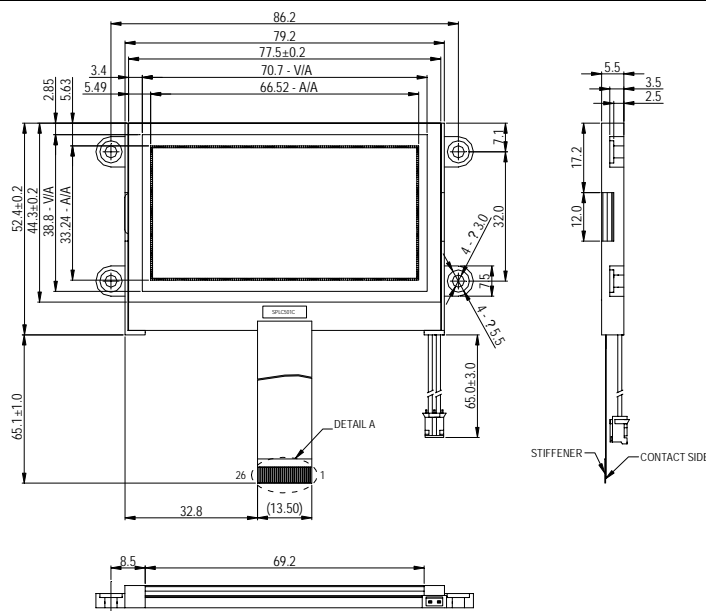
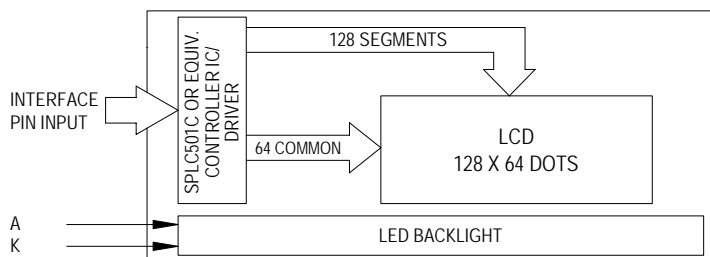


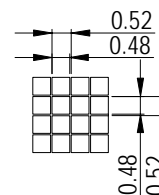
OUTLINE DIMENSION



BLOCK DIAGRAM



DISPLAY PATTERN



MECHANICAL SPECIFICATION

Item	Dimensions(W)X(H)	Unit
Overall Size	93.7x52.4	MM
View Area	70.7x38.8	MM
Dot Size	0.48x0.48	MM
Dot Pitch	0.52x0.52	MM

PIN ASSIGNMENT

Pin no	Symbol	Description
1	CS1	Chip select
2	RES	Reset pin
3	A0	command/data select
4	/WR	Write signal
5	/RD	Read signal
6~13	DB0~DB7	Data bus line
14	VDD	Power supply for logic
15	VSS	Ground
16	VOUT	DC-DC voltage converter
17	C3N	DC-DC voltage converter
18,19	C1P,C1N	DC-DC voltage converter
20,21	C2N,C2P	DC-DC voltage converter
22~26	V1~V5	Power supply for LCD

ABSOLUTE MAXIMUM RATING

Item	Symbol	Condition	Min	Max	Unit
Supply for logic voltage	V _{DD}	25°C	-0.3	7.0	V
LCD driving supply voltage	V _{LCD}	25°C	+0.3	-12.0	V
Input voltage	V _I	25°C	-0.3	V _{DD} +0.3	V

ELECTRICAL CHARACTERISTICS

Item	Symbol	Condition	Min	Typical	Max	Unit
Supply voltage for logic	V _{DD}	25°C	---	3.3	---	V
Supply current for logic	I _{DD}	25°C	---	1.6	---	mA
Operating for LCD	V _{LCD}	V _{DD} -V ₀	---	---	---	V
Input voltage "H" level	V _{IH}	---	0.7V _{DD}	---	V _{DD}	V
Input voltage "L" level	V _{IL}	---	V _{SS}	---	0.3V _{DD}	V
Supply voltage for backlight	V _{BL}	---	According backlight type		---	V
Supply current for backlight	I _{BL}	---	According backlight type		---	mA

REMARKS:

- LCD options: STN, FSTN.
- Back light type: LED Back light feature.